



Breeding shrimp for changing environments

Hendrix Genetics / Kona Bay

Nucleus based on Hawaii

- Main nucleus breeding centre
- 4 shrimp geneticist
 - Supported by 19 professionals in Research & Technology Centre (geneticists, data scientist, engineers)
- 3 products
 - Speed
 - Strength
 - Balance



KONA BAY



Nucleus

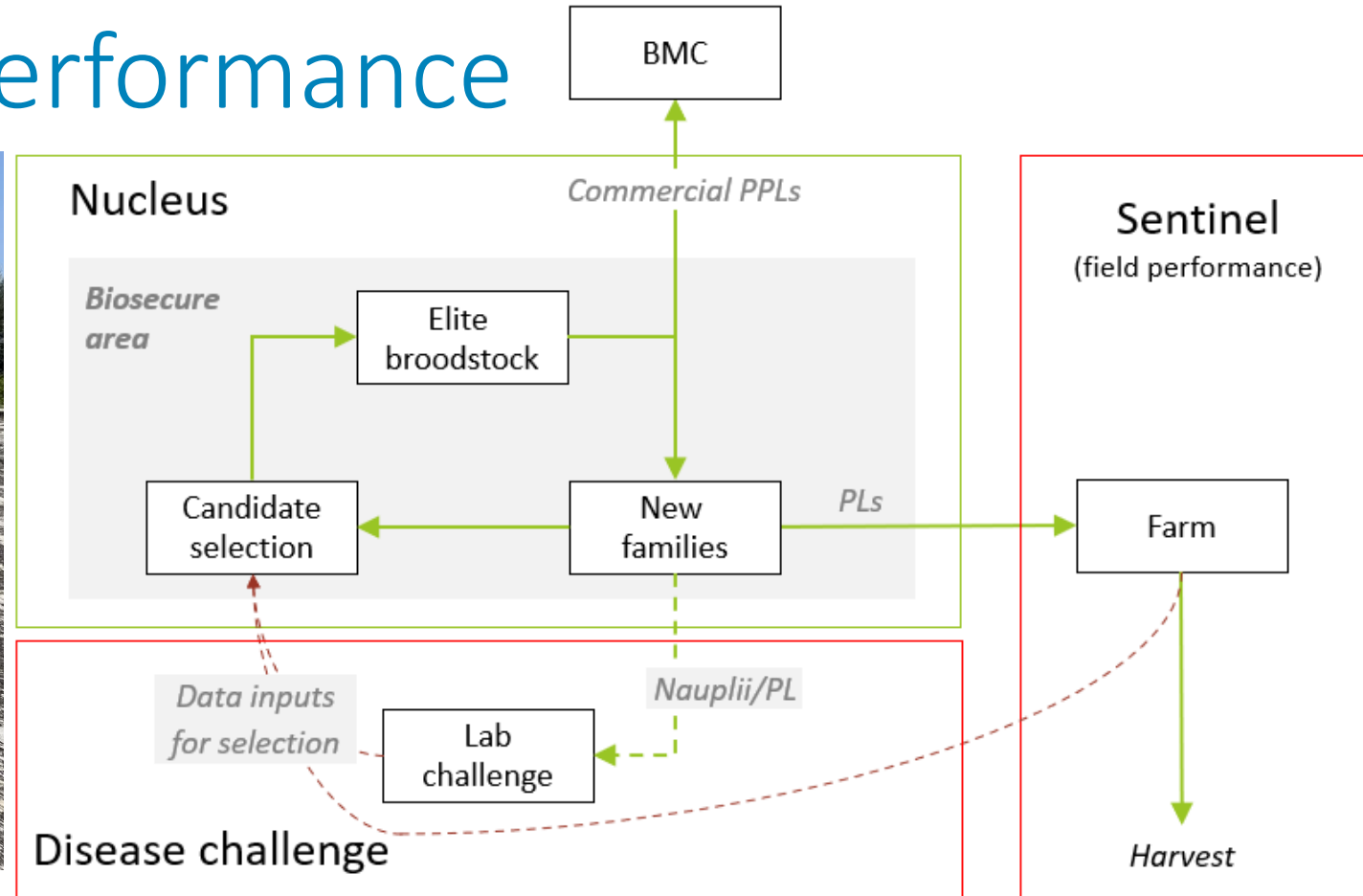
Sentinels

Disease
challenges

Genomics

BMC

Selecting for field performance



NO SHRIMP WILL GO BACK INTO THE NUCLEUS

Nucleus

Sentinels

Disease challenges

Genomics

BMC

Selecting for tolerance

- AHPND (EMS)
- EHP
- General robustness



Nucleus

Sentinels

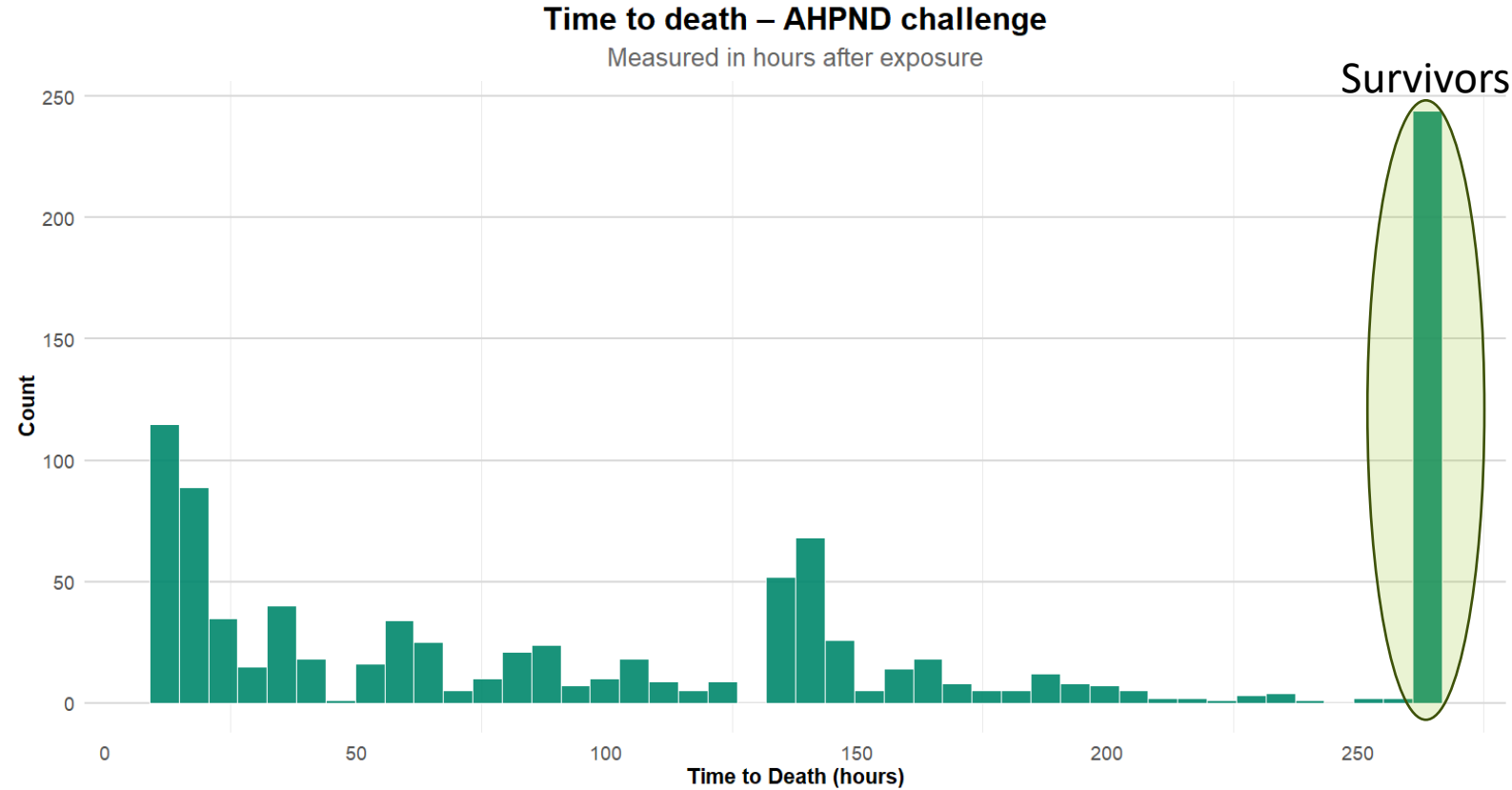
Disease
challenges

Genomics

BMC

Selecting for tolerance

- AHPND (EMS)
- EHP
- General robustness



Nucleus

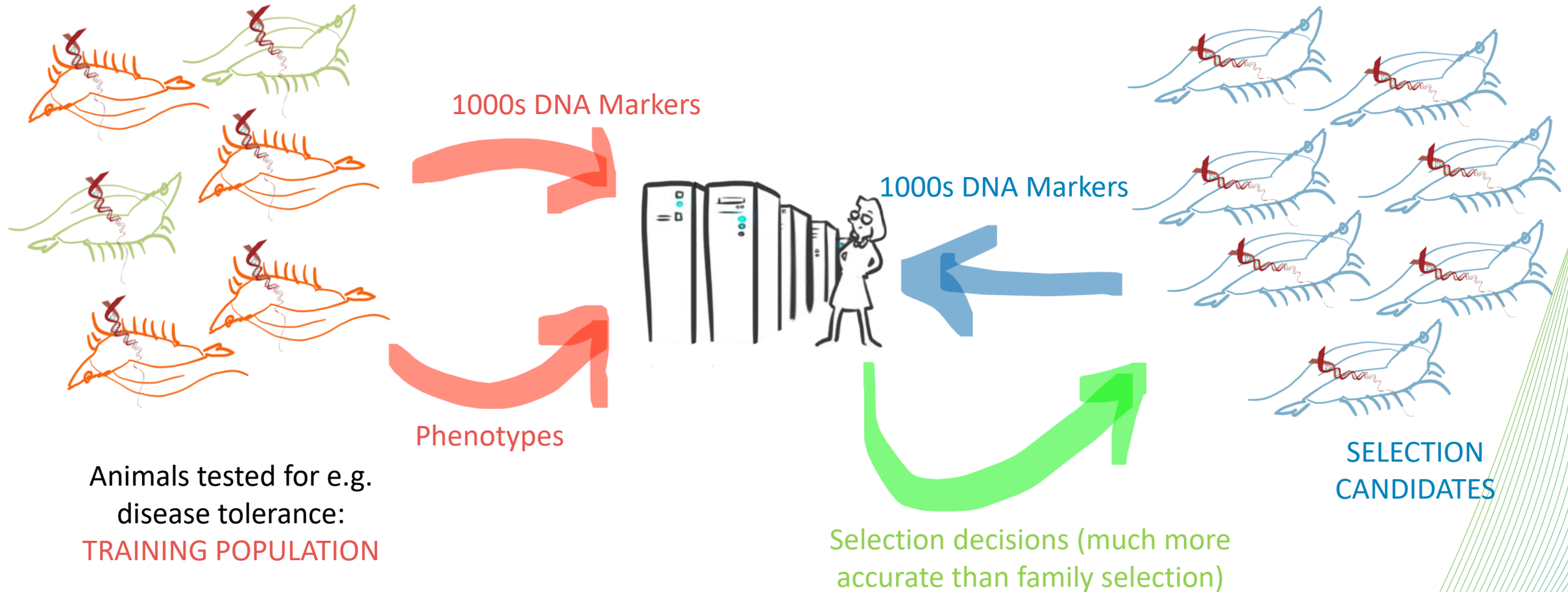
Sentinels

Disease
challenges

Genomics

BMC

Genomic selection



Nucleus

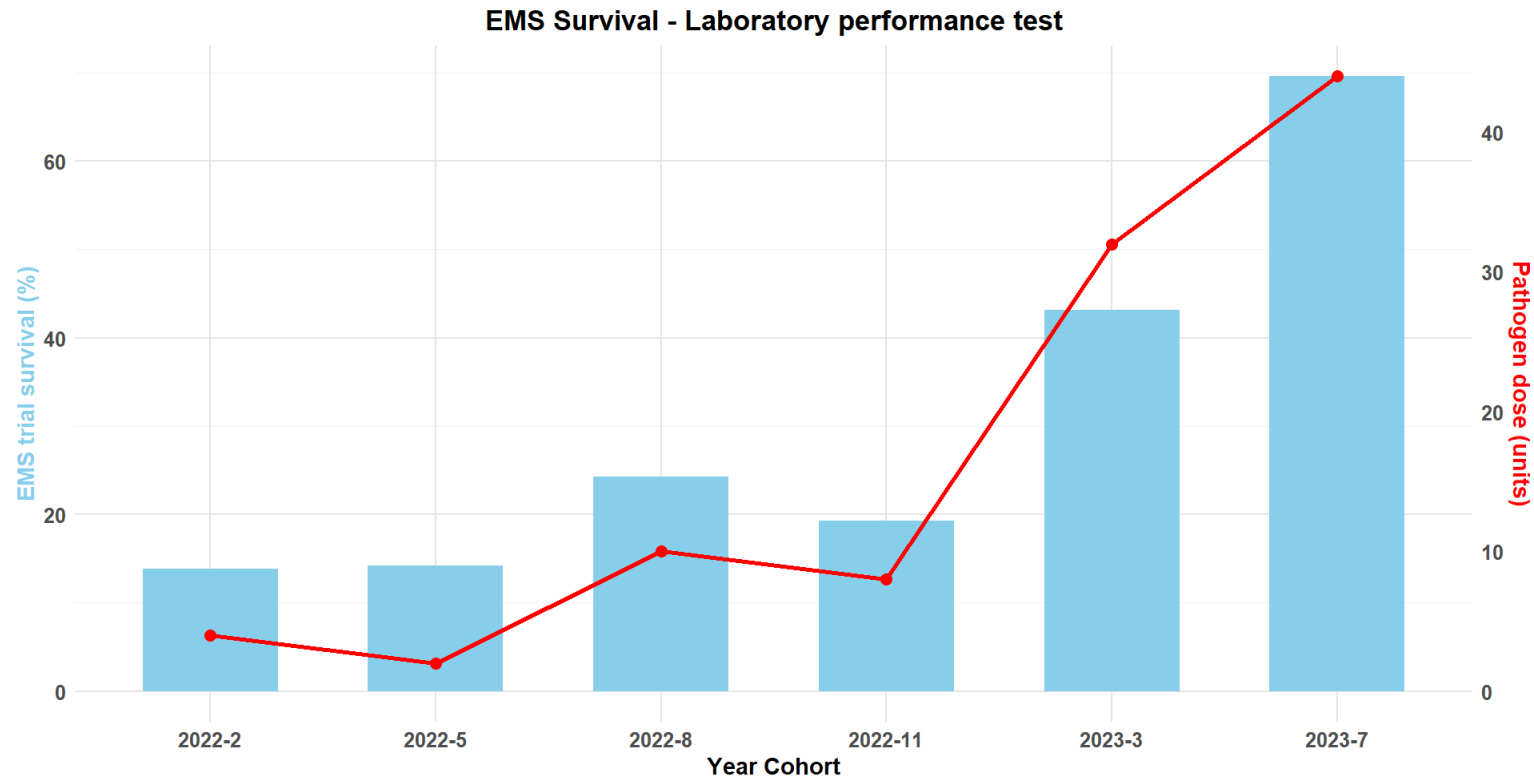
Sentinels

Disease
challenges

Genomics

BMC

The power of genomic selection



But not a silver bullet! Good management is essential

Nucleus

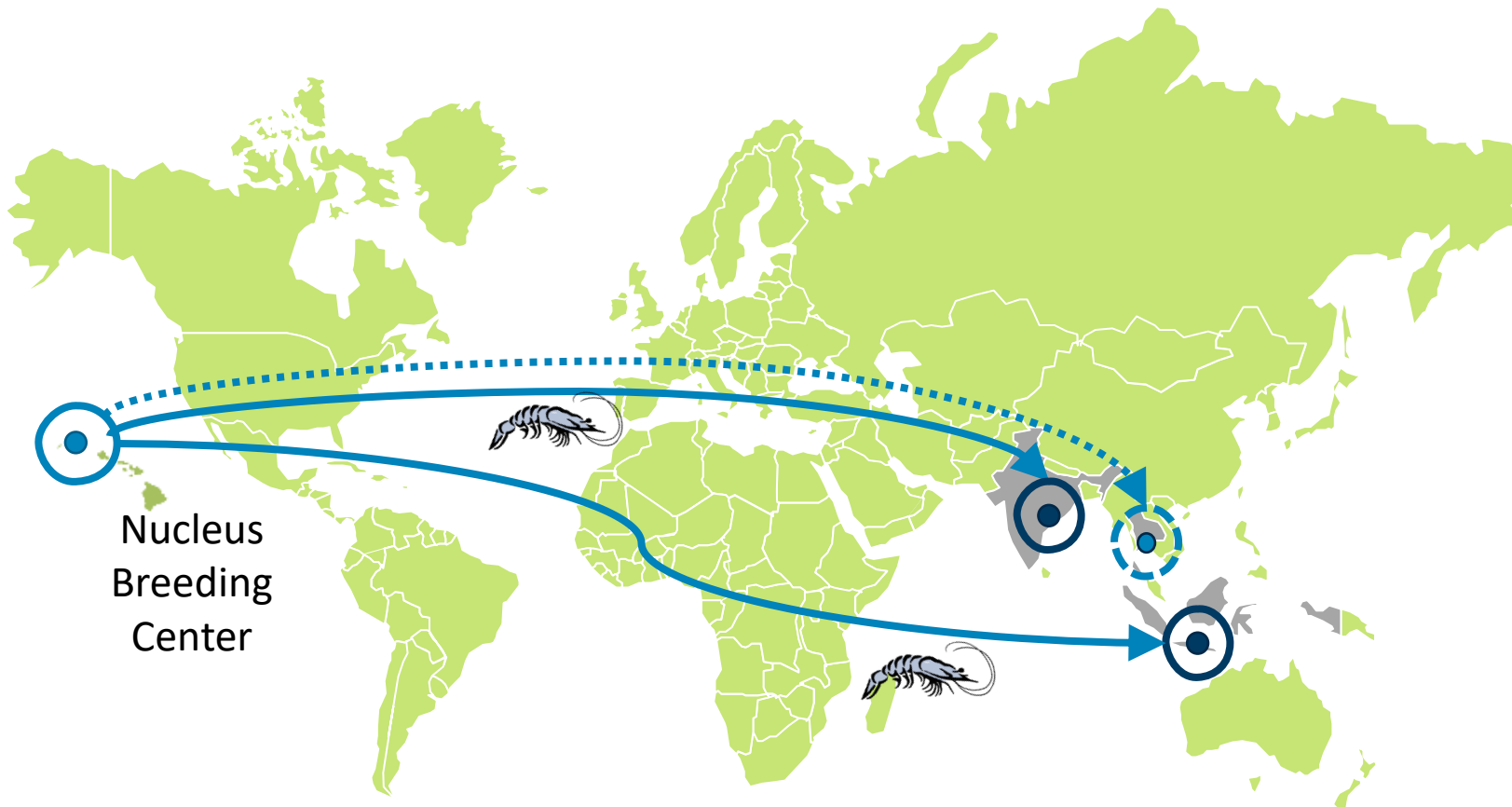
Sentinels

Disease
challenges

Genomics

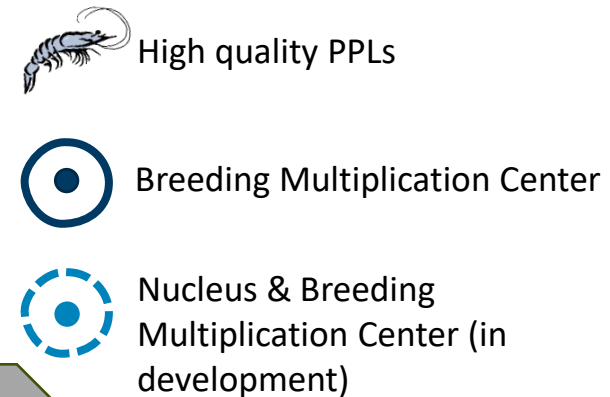
BMC

Constructing a distribution *ecosystem*



Goal:

- Secure supply chain
- Adapting to local conditions
- Remove import obstacles



Nucleus

Sentinels

Disease
challenges

Genomics

BMC

Terima Kasih!

Better Breeding Today. Brighter Life Tomorrow.

