

Sustainable feeds for intensive farming

CASE STUDY: ShrimpVet, Vietnam
EcoSeafood Group – An ESG company

Loc Tran



Future of Fish Feed

Contests



Carnivore Edition

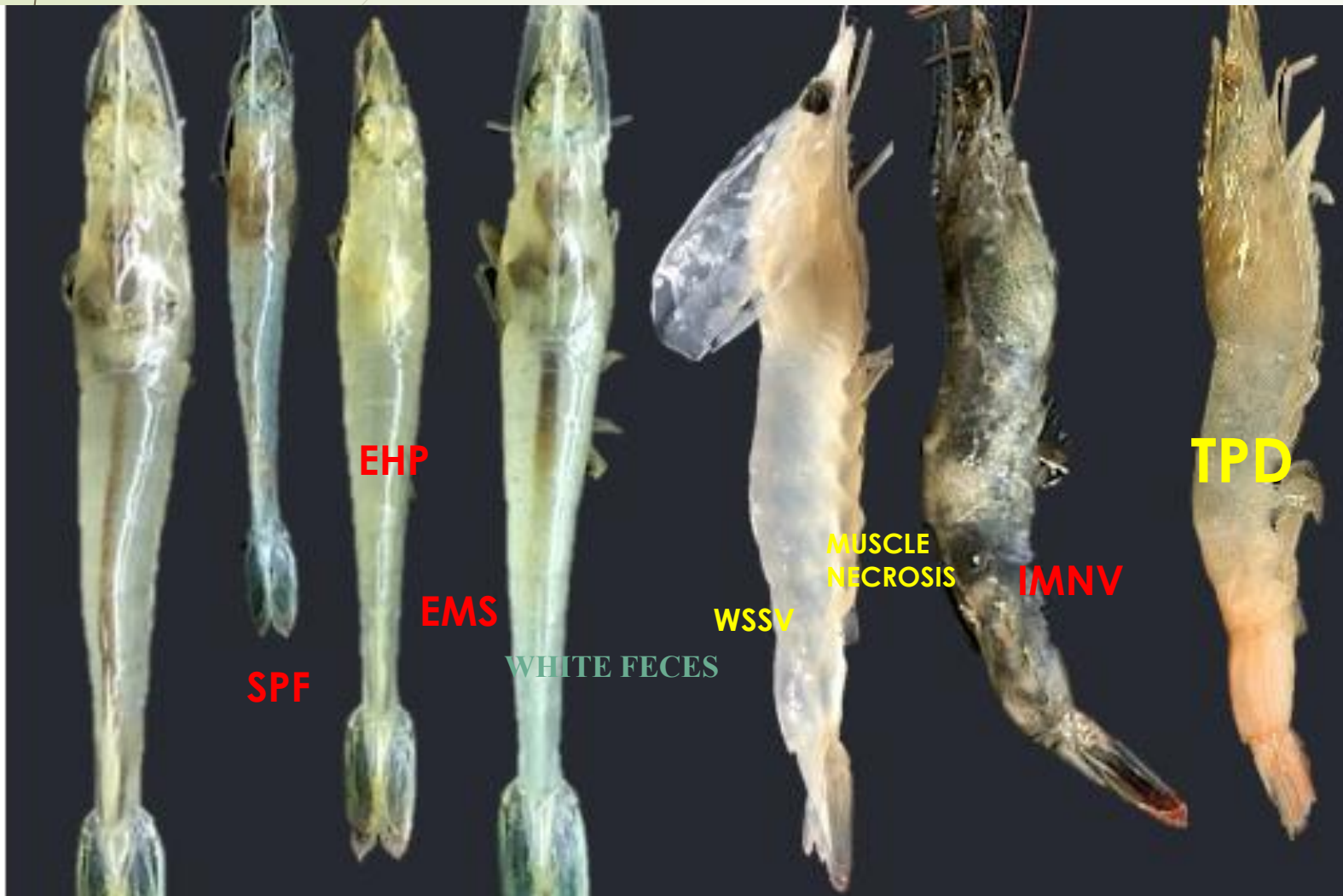
Meetings & Webinars



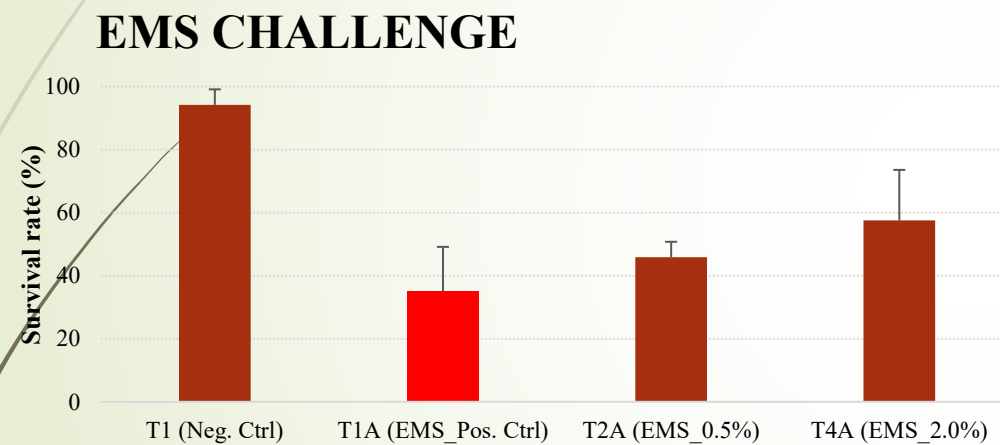
Research



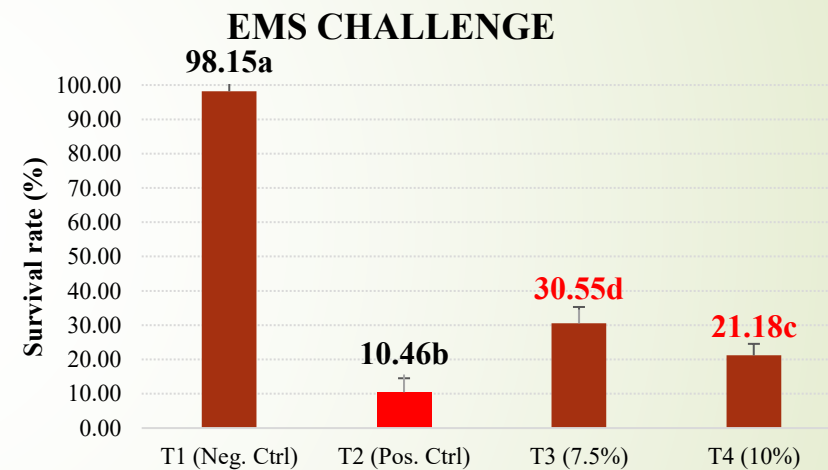
Major diseases

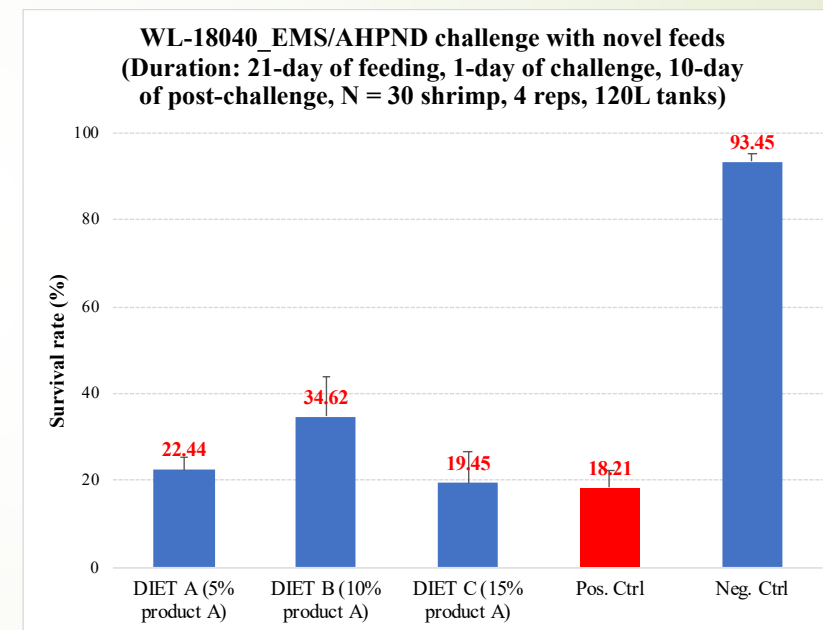
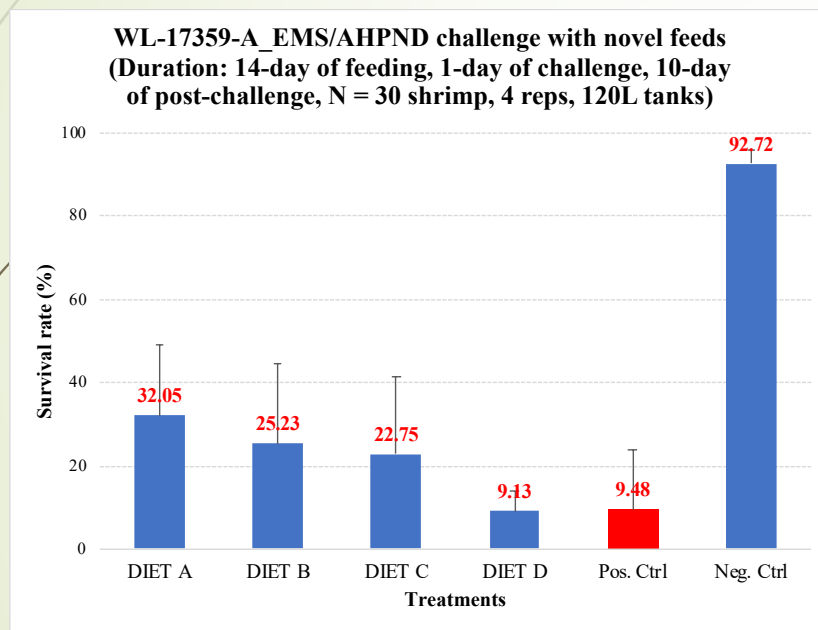


Yeast supplemented feed



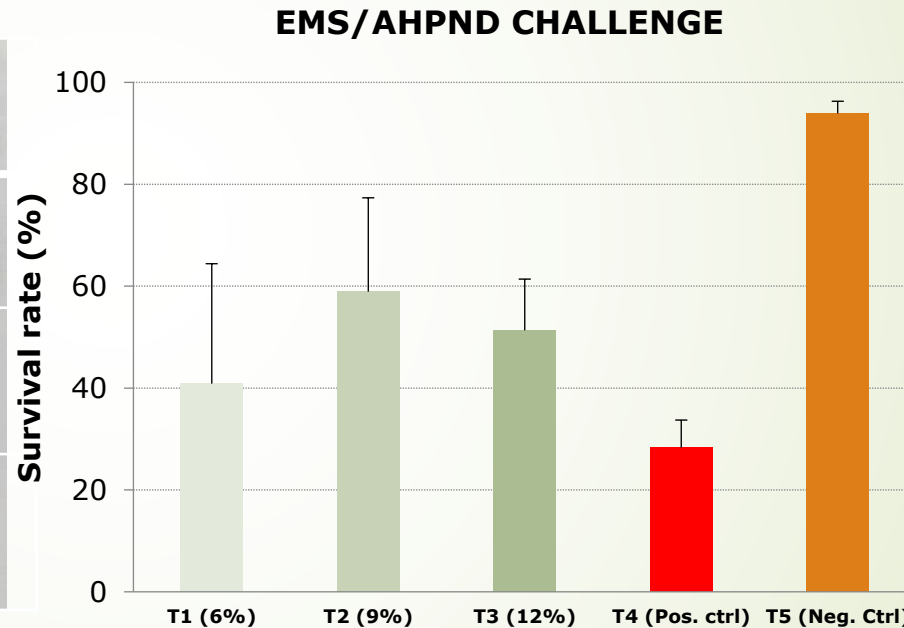
FERMENTED PLANT PROTEIN CONCENTRATE



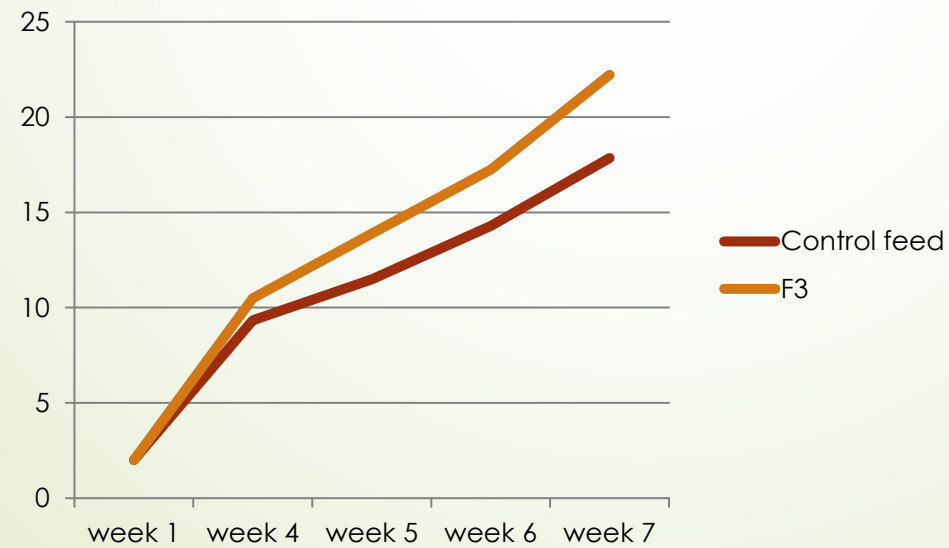


FEED WITH FERMENTED INGREDIENTS

6-9% inclusion of fermented plant proteins result in higher growth rate, pigmentation, and disease tolerance.

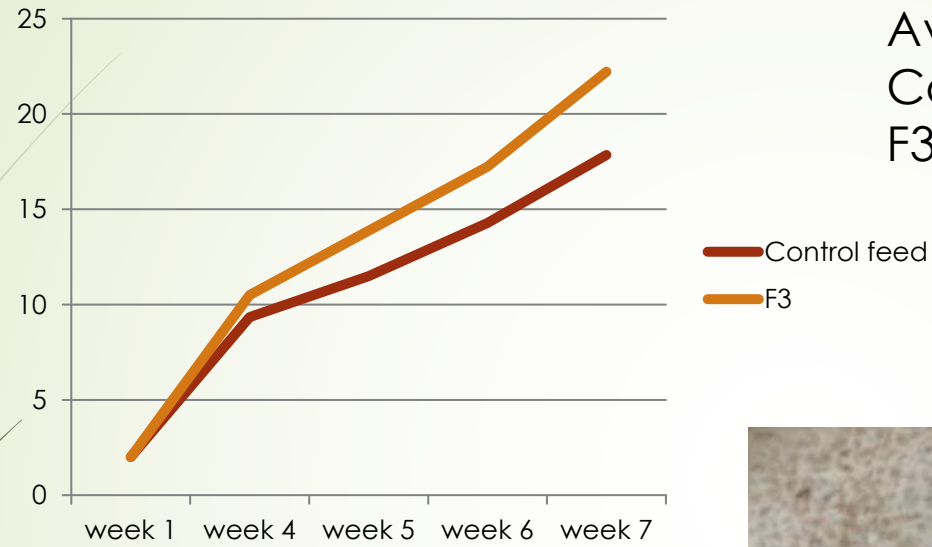


F3- Commercial-scale trial in Vietnam



Results

Growth data



Average daily growth (ADG):
Commercial feed: 0.36
F3: 0.45

F3 Commercial





EcoSeafood Group

MODULE 1: 30 HA, 42 PONDS, 6 CROPS/YEAR, 2,000 TONS/YEAR

WATER TREATMENT

WATER TREATMENT

NURSERY

NURSERY

FISH POND & MANGROVE

PRODUCTION PONDS

FISH POND & MANGROVE

EcoSeafood Group
FISH POND & MANGROVE

MODULE: 30 HA, 42 PONDS, 6 CROPS/YEAR, 2,000 TONS/YEAR

- Zero discharge: All waste recycled by integrated species (fish, mollusks, seaweed, flies).

Thank you!

