

Shrimpl

A Global, Independent, and
Secure Open Access **Operating
System** for **Modern Aquaculture.**

We work with industry to bring the world's best validated science to our leading, independent, trusted and secure digital platform for smarter, more connected, and sustainable aquaculture.



We Enable



Client Connection



Powering secure, trusted and efficient data exchange across aquaculture value chain partners.



Margin Optimization



Margin improvement through improved, client management, risk management, portfolio optimization and default reduction.



Lending & Insurance



Standardized risk and sustainability frameworks provide end-to-end visibility. Unlocking credit and insurance withdrawn/unavailable due to limited downstream oversight.

Upstream & Downstream

1

Producer OS

App based OS for smaller farms, App + SAAS for large corporates. Secure data storage, advanced scientific analytics, insights and data sharing.

2

Feed Mill OS

End to end client, sales, technical, credit assessment and business analytics operating system. Including sustainability and LCA services.

3

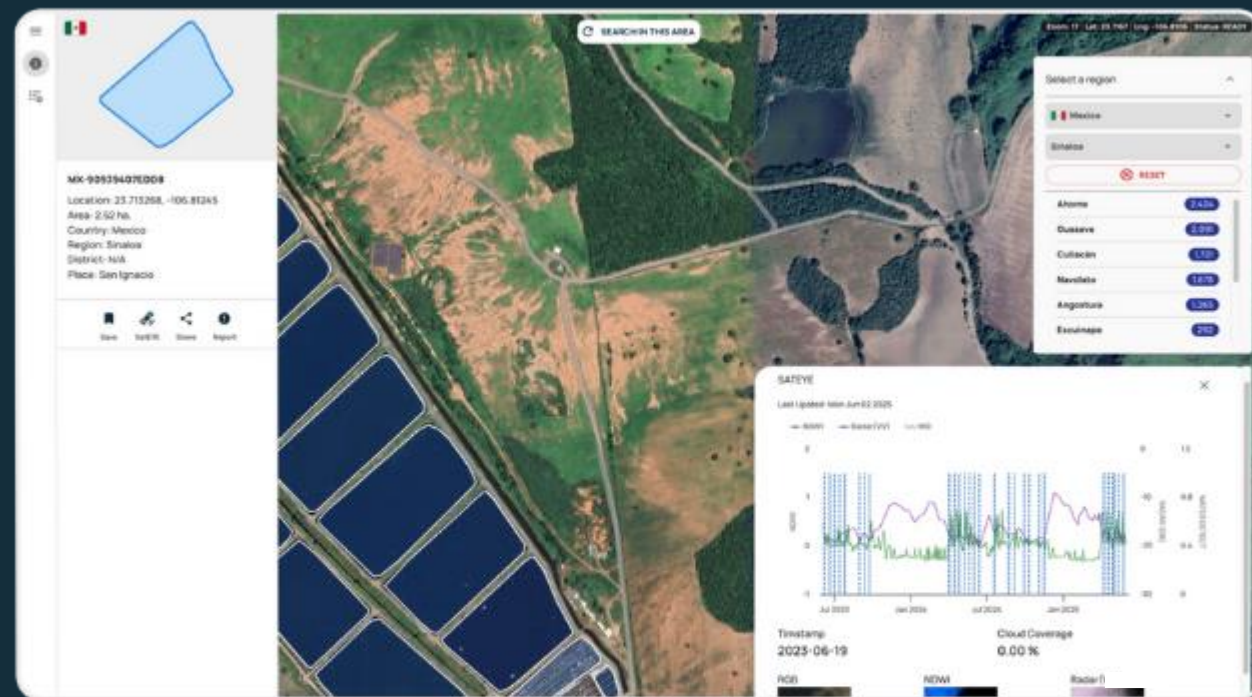
Financial OS

Integrated and standardized risk framework for lenders and insurance groups with detailed sustainability reporting.



SATEYE

- > 1,000,000ha digitized, indexed & monitored
- Utility foundation
(Finance, Insurance, Sustainability, Traceability)
- Pond activity monitoring
- Traceability foundation
- Digital management platform
- Organization workflow digitalisation, scenario modelling



Global Aquaculture Digital Twin

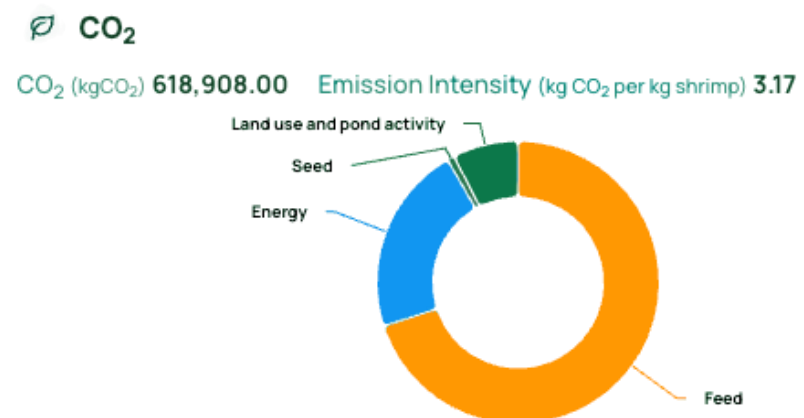


Sustainability Monitoring & Tracking

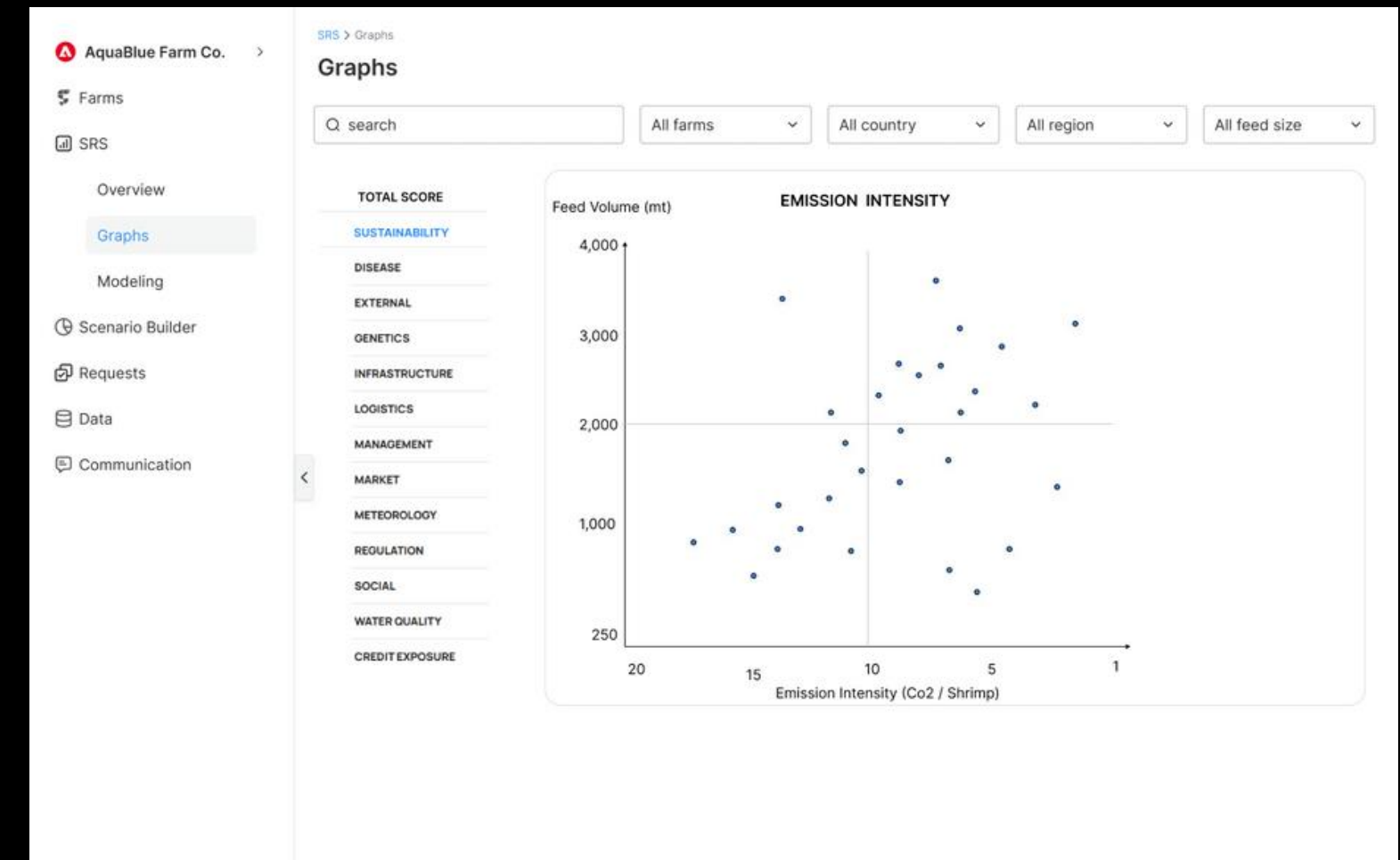
Satellite Monitoring



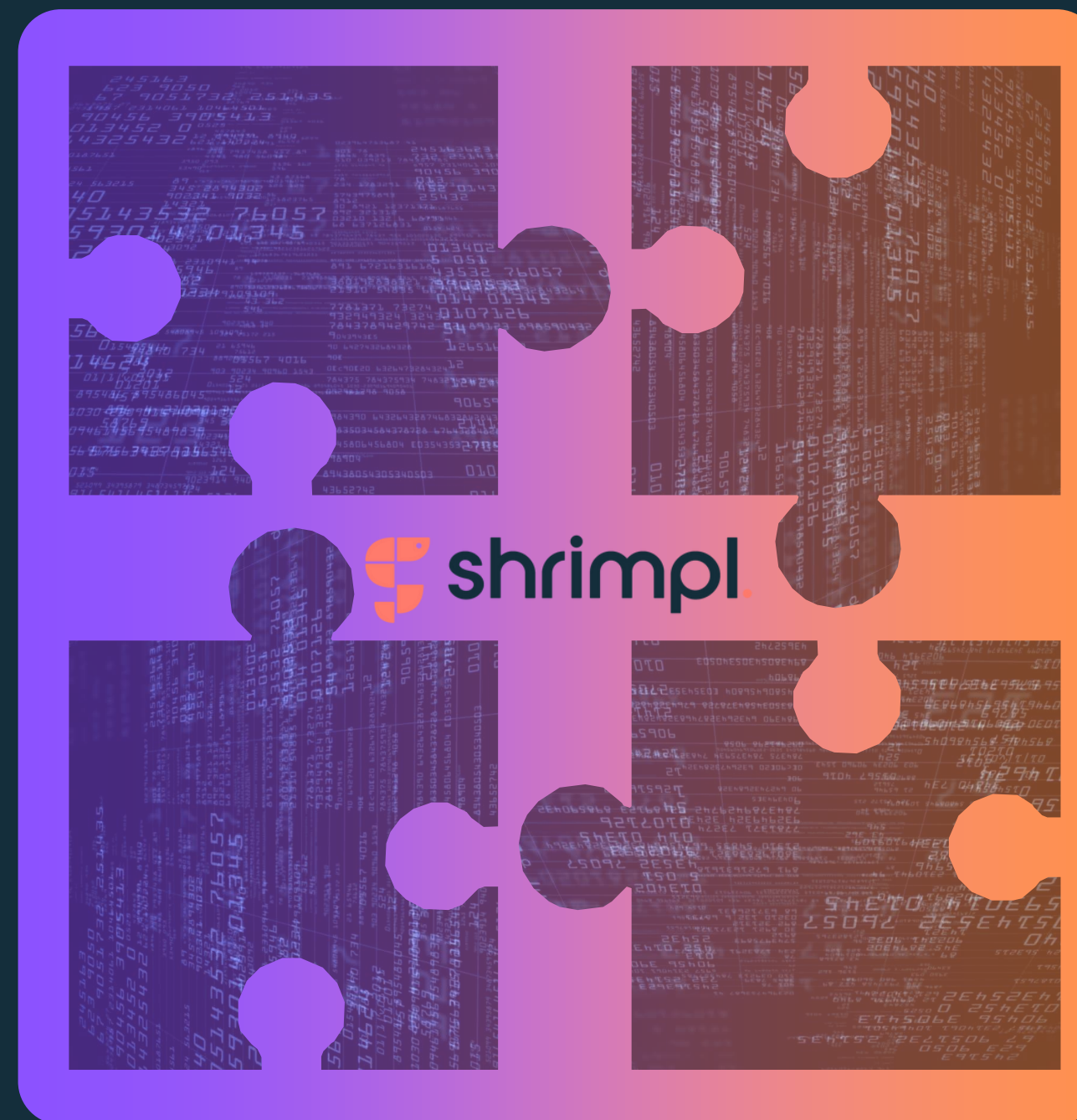
Pond & Farm Co2
Emission Intensity
Monitoring



Custom Portfolio
Sustainability Reporting



Thank You!



Website
www.shrimpl.com

June 2025